

ARIES

Electronic Trim Set
User Manual
EN 01



ISEO[®]

iseo.com

About this manual

Dear Customer,

Thanks for choosing this innovative ISEO product, designed and developed following the highest standard of production, for an effective user-friendly and, at the same time, powerful and flexible access control.

This manual explains the functions, configurations and characteristics of *Aries*, the ISEO electronic Trim Set.

For commercial documents (catalogues and leaflets), technical documents (installation and maintenance manuals) and certifications, refers to the ISEO website at the following link:

<https://www.iseo.com>

Information icons

For an easy reading of the manual, please take note of the following icons:



WARNING: situations that could cause injury to yourself or others.



CAUTION: situations that could cause damage to your *Device* or other equipment.



NOTE: notes, suggestions and additional information.

About this manual

Information on copyright

- No part of this guide may be reproduced, distributed, translated, or transmitted in any form or by any means, electronic or mechanical, including photocopying, recording, or storing in any information storage and retrieval system, without the prior written permission of ISEO.
- ISEO reserves the right to change the specifications of the hardware and software described in this manual at any time and without prior notice.
- ISEO will not be held liable for any damages resulting from the use of this product.

Trademarks

- The Apple logo, Apple™, iPhone™, iPad™ and App Store™ are trademarks of APPLE Inc.
- The Android logo, Google™, YouTube™, Google Play™ Store are trademarks of Google Inc.
- Bluetooth® is a registered trademark of Bluetooth SIG, Inc. worldwide.
- IOS is a trademark or registered trademark of Cisco in the U.S. and other countries.
- MIFARE® is a registered Trademark of NXP B. V.
- All other trademarks and copyrights are the property of their respective owners.

Keywords

- **Access control device:** electronic and/or mechanical device to allow selective access through the users' door.
- **Contactless card:** electronic card that can be read by the *Access control device*, by simply bringing it closer to the same, without physical contact.
- **Credential:** device that allows to identify the user and authorize or not authorize access through a door. For example: smartphone, tablets, Mifare cards or Mifare tags.
- **Door:** passage which access is electronically controlled by the *Access control device*.
- **Master Card:** *Contactless card* used to program the system.
- **Master Card set:** set of three *Master Cards* numbered from 1 to 3, belonging to the same *System code*. The *Master Card* of higher number disable the *Master Card* of lower number.
- **Opening time:** time during which a door remains open, following a standard opening through credential.
- **Programming mode:** software condition, feasible by *Master Card*, that allows software modification to the *Device*.
- **Smart series:** *Access control devices* featuring a built-in Bluetooth radio.
- **System code:** unique number associated to a *Master Card set*.
- **User card:** *Contactless card* used to open one or more doors.
- **Users list:** list of *User cards* enabled to open an *Access control device*.

Table of Contents

About this manual

- 3 Information icons
- 4 Information on copyright
- 4 Trademarks
- 4 Keywords

Safety and Environment

- 6 Warnings
- 7 Handling lithium batteries
- 8 Disposal and recycling

Certifications

- 9 Certifications and compliance

Overview

- 11 What is Aries Smart
- 12 Technical data
- 14 Dimensions
- 15 Options and versions

Getting started

- 18 Package contents
- 19 Installing Aries
- 19 Programming and using Aries
- 19 Privacy function

Maintenance

- 20 Battery replacement
- 22 Emergency opening by mechanical key
- 26 Cleaning
- 26 Storage

Troubleshooting

- 27 Error messages
- 27 Aries Troubleshooting
- 28 Light and acoustic signals
- 28 Technical assistance

Safety and Environment

To prevent damage to your product or injury to yourself or to others, read the following safety precautions in their entirety before using this equipment.

Keep this manual in a convenient place so that you can refer to it when necessary.



Warnings

- Read this manual prior to use the device in order to ensure a safe and proper use.
- Preserve this manual as future reference.
- The installation of the device requires the intervention of qualified staff, adequately trained by ISEO.
- The instructions should be carefully followed during installation. These instructions and any maintenance instructions should be passed on by the installer to the user.
- No modifications of any kind are permitted, except for those described in these instructions.
- The product must be destined only for the use for which it is expressly designed and therefore as a cylinder of door lock for civil and industrial locations. Any other use is considered improper and dangerous.
- For outdoors installation use Aries IP55 version. Ensure anyway, to retain the IP certification, that water does not run over the door surface, entering through the door and the gaskets, or inside the door itself (for example in case of empty door in the inside). Ensure also, in case the door has grooves, that water does not run under the Aries gaskets.
- Be careful to not hit or scratch Aries cover with hard or sharp objects (keys, rings or other metal objects).
- Check the lock latch movement is not subjected to any friction (maximum allowed torque 10Nm).
- Do not use or spray any lubricant and antioxidant oil in the Aries trim set.
- RFID: frequency 13,553 - 13,567 MHz, maximum magnetic field: 0,12 μ A/m (measured at 3m at the maximum power capacity)
- Only for device with on-board radio: frequency 2,40 - 2,4835 GHz, maximum power: 4,0 mW
- Operating temperature: -20°C + 60°C



Handling lithium batteries

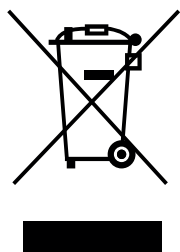
Batteries may leak or explode if improperly handled. Observe the following precautions when handling batteries for use in this product:

- Do not connect the battery during the shipping and the storage. Connet the battery just during installation and use.
- Risk of explosion if the battery is replaced by an incorrect type.
- Use only battery of the same type as indicated in the product installation guide.
- Do not open, drill through or squash lithium batteries.
- Do not expose the battery to flame or to excessive heat.
- Do not immerse in or expose to water.
- Do not short circuit lithium batteries.
- Do not recharge lithium batteries.
- Do not connect lithium batteries in parallel.
- Do not transport or store the battery with metal objects such as necklaces or hairpins.

Disposal and recycling

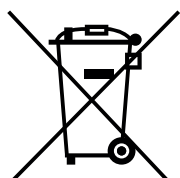
This product and battery are designated for separate collection at an appropriate collection point. Do not dispose of as household waste.

For more information, contact the retailer or the local authorities in charge of waste management.



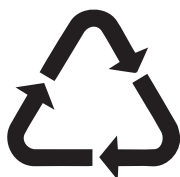
Dispose of the product separately from household waste, in accordance with local laws and regulations.

Remove the batteries before disposing of the product.



This symbol on the battery indicates that the battery is to be collected separately.

Dispose of batteries according to your local environmental laws and guidelines.



This symbol indicates to not dispose of the packaging with household waste, but send it for recycling.

Certifications

Certifications and compliance

In conformity with the essential requirements and other relevant requirements of the:

2014/53/UE Directive (RED = radio)

2011/65/UE Directive (RoHS)



Download the conformity certificate at iseo.com website

Your mobile device is a radio transmitter and receiver. It is designed not to exceed the limits for exposure to radio waves (radio frequency electromagnetic fields), recommended by international guidelines.

| Classification | Result |
|-----------------------------|---|
| Product Standard | <ul style="list-style-type: none"> • EN 1906 |
| Classification reached | <ul style="list-style-type: none"> • 3 7 0 0 0 N P D 0 A |
| Category of Use (1) | <ul style="list-style-type: none"> • Grade 3: high frequency of use by public or others with little incentive to exercise care and with a high chance of misuse. |
| Durability (4-6) | <ul style="list-style-type: none"> • Grade 7: high frequency of use, 200.000 cycles. |
| Fire/smoke resistance (0-B) | <ul style="list-style-type: none"> • Grade 0: no performance determined. |
| Safety | <ul style="list-style-type: none"> • Grade 0: normal use. |
| Corrosion resistance | <ul style="list-style-type: none"> • No Performance Determined. |
| Security | <ul style="list-style-type: none"> • Grade 0: no performance determined. |
| Type of operation | <ul style="list-style-type: none"> • Type A: spring-assisted furniture. |

Certifications

| Environmental resistance | Result |
|--------------------------|--|
| Temperature range | <ul style="list-style-type: none"> • Operating temperature: -20°C ÷ +60°C • Storage temperature: -25°C ÷ +75°C |
| Humidity | <ul style="list-style-type: none"> • Max 95% non condensation. |
| Protection by enclosures | Depending on the model: <ul style="list-style-type: none"> • IP54 (protected installations) • IP55 (Outdoor installations) |

| Frequency type | Frequency band | MAX emission value |
|-----------------|---------------------|---|
| RFID tag reader | 13,553 - 13,567 MHz | Maximum magnetic field: 0,12 µA/m (at 3m) |
| BTLE | 2,40 - 2,4835 GHz | Maximum power: 4,0 mW |

Overview

What is Aries

Aries is the electronic trim set can be installed on almost any door currently available on the market, and it's designed to work with most mechanical locks. It's battery operated, so doesn't require any wiring. This makes it the ideal solution for managing access, ensuring optimum flexibility and low installation costs for both new installations and application on existing doors.

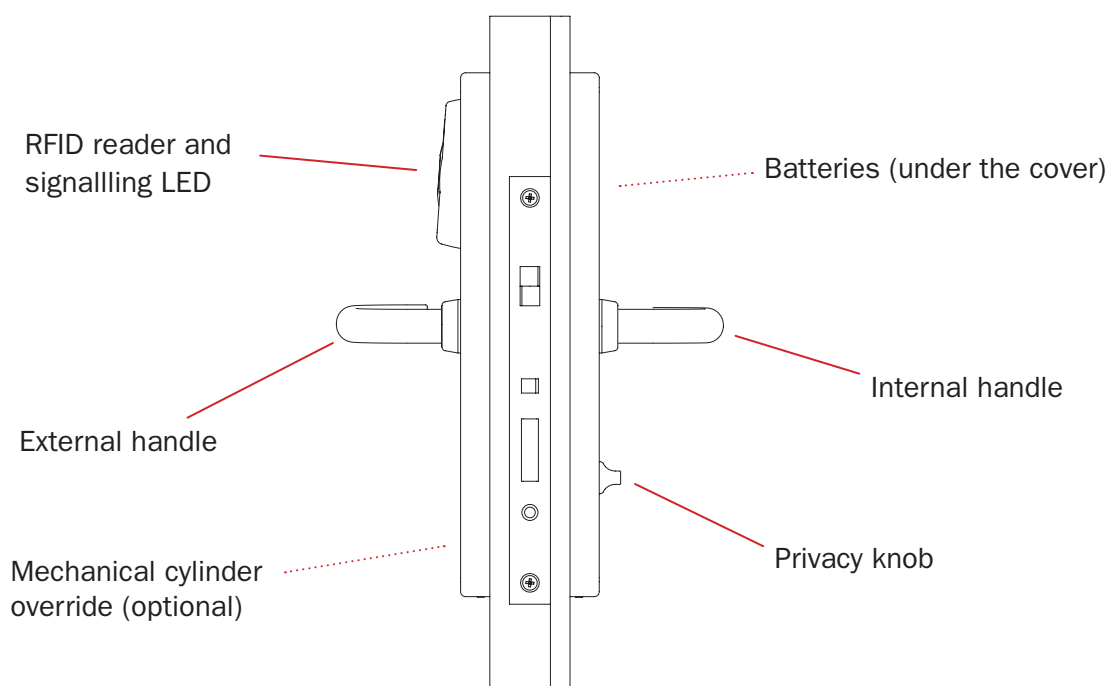
Aries is also available with *Bluetooth Smart* technology inside (*Aries Smart* version), in order to work with *Argo*, the new ISEO application running on iOS and Android smartphone.



For the installation of *Argo app*, device initialization, setup of the opening, and other operations not described herein, refer to the *Argo User Manual*, available at iseo.com.

EXTERNAL SIDE OF THE DOOR

INTERNAL SIDE OF THE DOOR



Aries take also advantages of the next importants and uniques features:

- Wake up by RFID card or phone detection (patented) or Real Time Clock.
- Low consumption battery operated.
- Permanently open mode (office mode), without extra battery consumption.
- Batteries voltage monitoring.
- Real Time Clock/Calendar.
- Optical and acoustic signalling.
- On-site software upgrading.

Overview

Technical data

| Feature | Characteristics |
|---|---|
| RFID Reader | <ul style="list-style-type: none"> • Multistandard 13,56 Mhz: • ISO14443A (Mifare Classic, Plus). • ISO14443B (i.e. ST microprocessor cards). • NFC (card emulation and Peer-to-Peer). |
| Communication interface Bluetooth 4.0 Module | <ul style="list-style-type: none"> • RFID Near Field Magnetic communication. • 2,4Ghz Radio Board. |
| Main batteries | <ul style="list-style-type: none"> • 2 x AA 3,6V high current lithium battery. • Battery replacement from the inside for more security. |
| Battery life (endurance) | <ul style="list-style-type: none"> • Aries: up to 5 years or 50.000 opening (*) • Aries Smart: up to 2 years or 20.000 opening (*) • 3 levels battery charge detection. <p>(*) Depending on usage, environment, options.</p> |
| Signalling | <ul style="list-style-type: none"> • LEDs: 1 Green, 1 Red visible on 360° ring. • Buzzer. |
| Software | <ul style="list-style-type: none"> • V364 Software. • VAR/OEM development platform available. • Argo app available for Android and iOS phones (Aries Smart). • Software upgrade on site. |
| Emergency override cylinder | <ul style="list-style-type: none"> • High Security Iseo R90 Factory Monoprofile. Up to 3 mechanical recodings. • Usage detected by electronics. KA on the same installation. |
| External emergency power supply | <ul style="list-style-type: none"> • For installations with no override cylinder. Connector under the external cover plate. • Standard 9V battery. |
| Privacy device (optional) | <ul style="list-style-type: none"> • Ergonomic knob. • Signal reset after each door opening. |
| Detection internal sensors | <ul style="list-style-type: none"> • External handle movement. • Internal handle movement. • Internal privacy button. • Emergency mechanical cylinder |

Overview

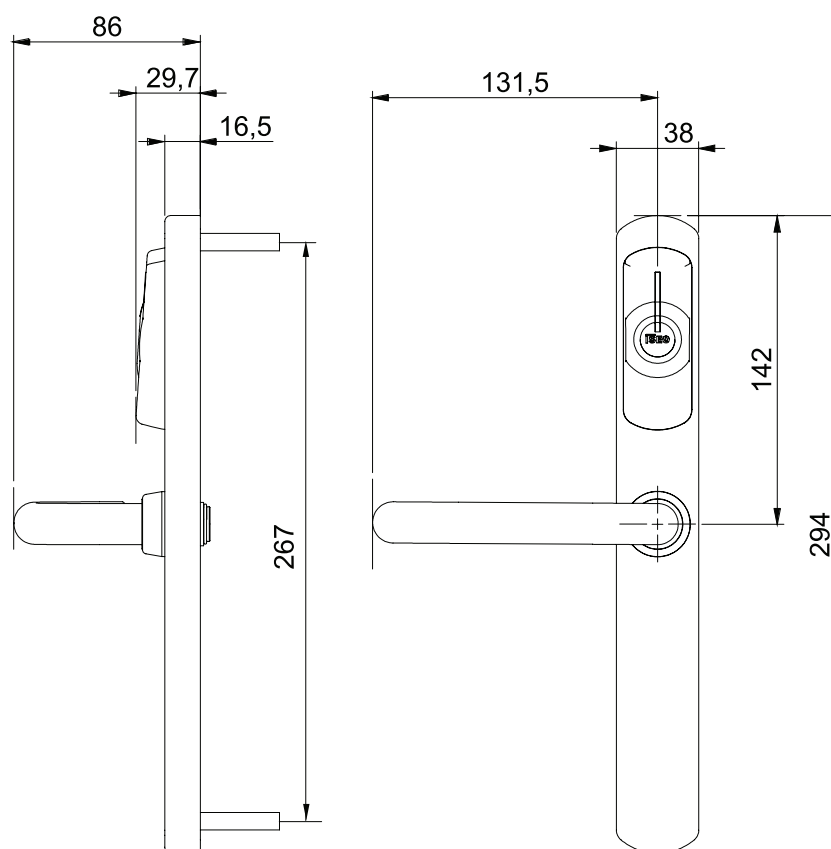
| Feature | Characteristics |
|-----------------------------------|--|
| Handle | <ul style="list-style-type: none"> • Safety U-shaped profile. • Left or right hand to be set during installation. • Free rotating handle: only after a valid RFID card presented to the reader the handle engages and is able to open the door. • Customize removable handle (on request). |
| Follower/cylinder center distance | <ul style="list-style-type: none"> • 70, 72, 85 and 92 mm. |
| Mechanical lock compatibility | <ul style="list-style-type: none"> • 7, 8 or 9 (**) mm handle follower. • Center distance follower/cylinder 70, 72, 85 and 92 mm. • Backset: minimum 25 mm. European profile cylinder hole. • Latch bolt only or automatic deadbolt function. <p>(**) With adaptor.</p> |
| Door thickness | <ul style="list-style-type: none"> • 40 - 85 mm (standard accessories). • 85 - 120 mm (special accessories). |
| Weight | <ul style="list-style-type: none"> • 1350 gr. |
| Finishes | <ul style="list-style-type: none"> • Inox • Polished inox • Satin brass (PVD) • Polished brass (PVD) • AntiGerm (on request) |
| Black plastic underplate | <ul style="list-style-type: none"> • 70mm width (to cover existing holes). |
| Environmental characteristics | <ul style="list-style-type: none"> • Operating temperature: -20°C ÷ +60°C. • Storage temperature: -25°C ÷ +75°C. • Protection system (IP grading): IP54 or IP55 (outdoor installations). |



For detailed commercial informatoin, please check related catalogue and leaflet at: iseo.com.

Overview

Dimensions



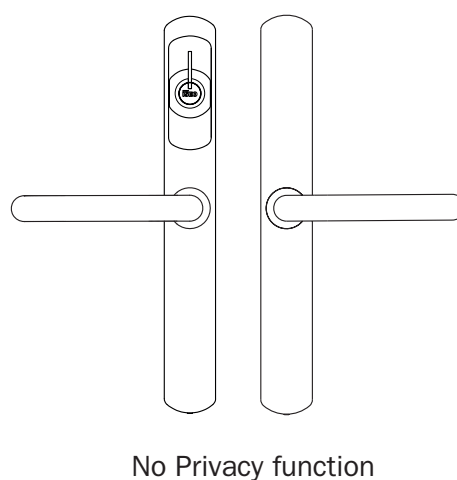
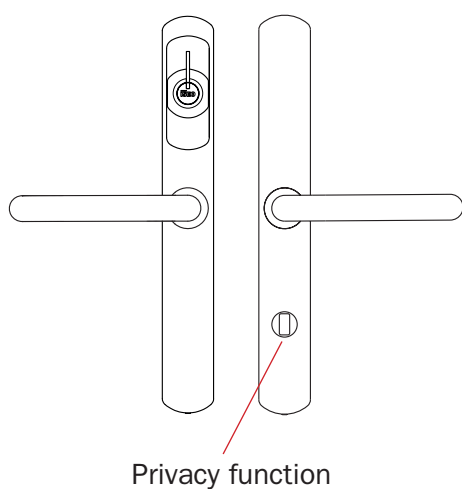
| Feature | Characteristics |
|-----------------------------------|---|
| Dimensions | <ul style="list-style-type: none"> • Plate width: 38 mm • Plate length: 294 mm • Plate thickness: 16,5 mm • Handle length: 131,5 mm from plate center |
| Weight | <ul style="list-style-type: none"> • 1350 gr. |
| Follower/cylinder center distance | <ul style="list-style-type: none"> • 70, 72, 85 and 92 mm. |

Overview

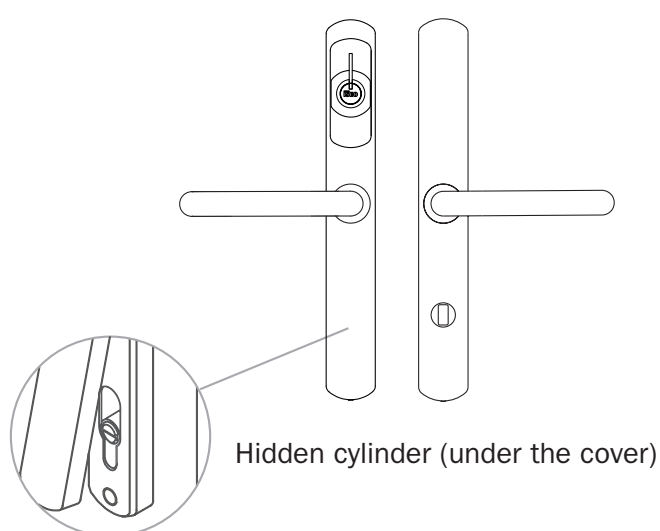
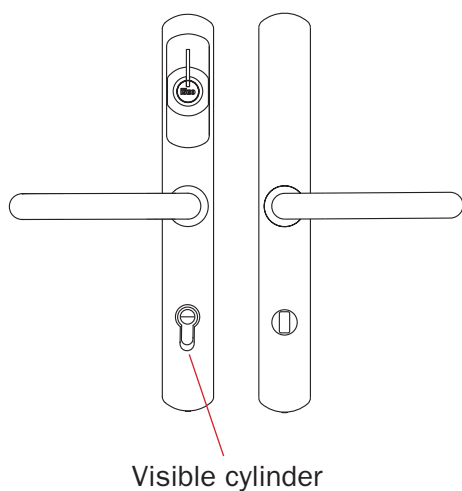
Options and versions

Aries can be supplied in different versions. The followings are the most commons ones. For all the available options and versions, check the on-line catalogue at iseo.com website.

1) *Aries* with or without privacy function.



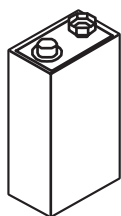
2) *Aries* with mechanical emergency key override with visible or hidden cylinder.



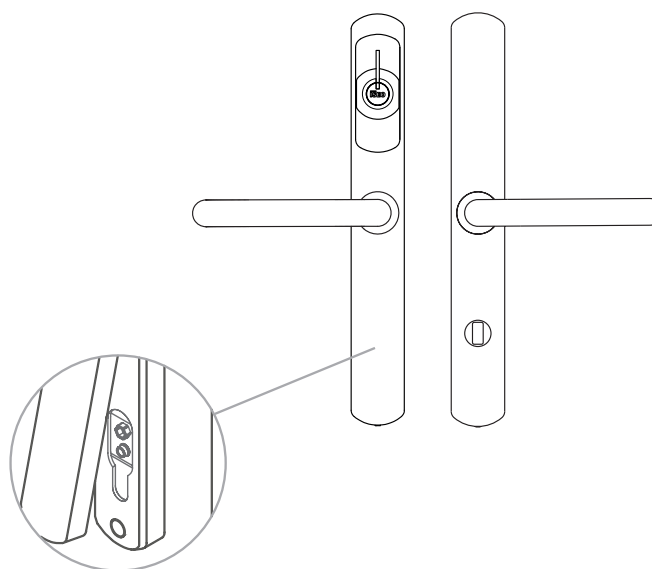
Options and versions

3) Aries with electric emergency power supply override (hidden).

At the place of the cylinder Aries has an electric plug for a standard 9V battery. To open the lock when internal batteries are empty, remove the external cover, plug-in the standard 9V battery to power up the lock, then read a valid credential to open.

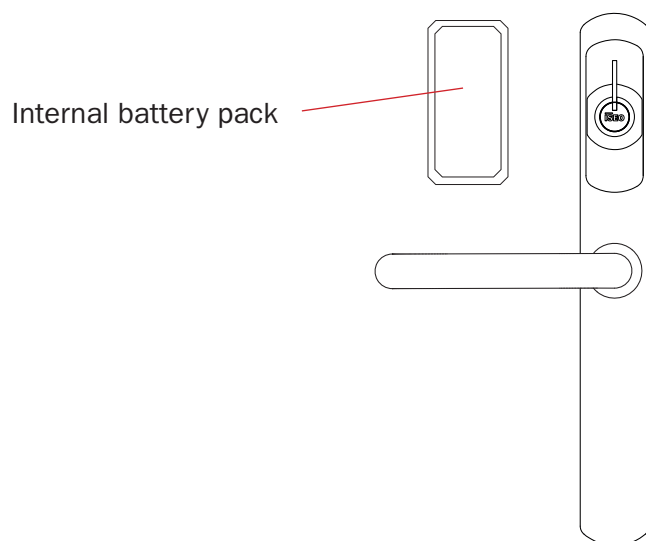


9V standard battery to be used for lock opening when internal Aries batteries are empty.



4) Aries for panic devices.

In this version Aries is supplied with the external plaque only. The batteries are placed in the internal side of the door, in a separated battery pack.

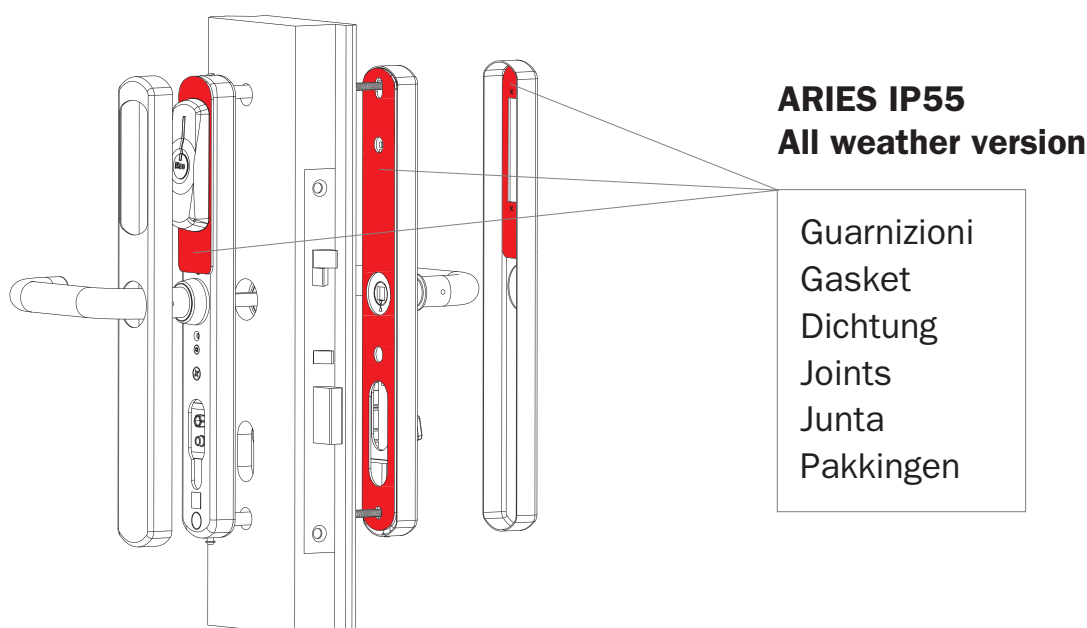


For more information about *Aries* installation, refer to the *Installation Guides* available at: iseo.com.

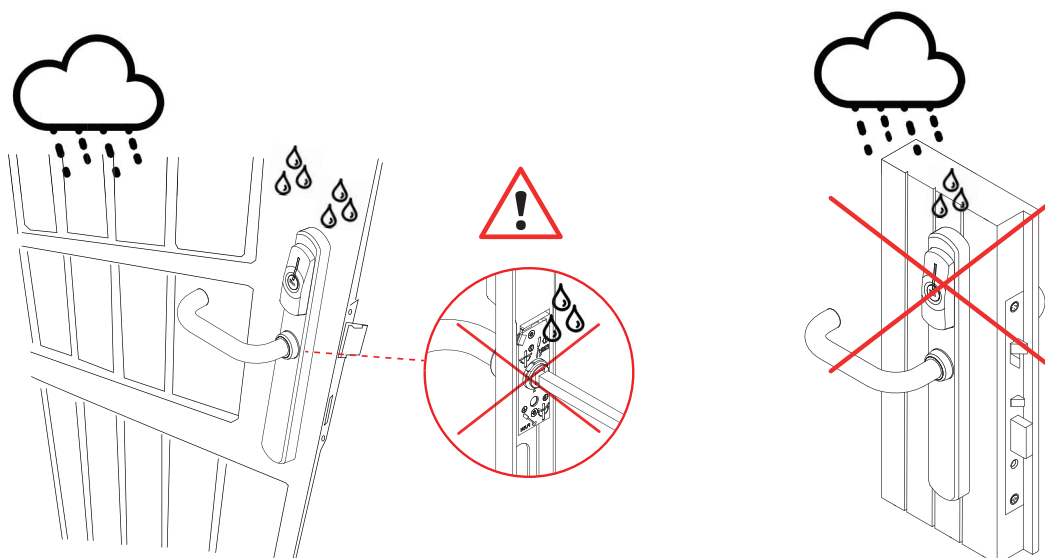
Options and versions

5) Aries IP55 (Outdoor installations)

Aries IP55 for outdoor installation, is provided with gaskets to isolate the electronic and the mechanic from water leaks.



For outdoors installation use Aries IP55 version. Ensure anyway, to retain the IP certification, that water does not run over the door surface, entering through the door and the gaskets, or inside the door itself (for example in case of empty door in the inside). Ensure also, in case the door has grooves, that water does not run under the Aries gaskets.



Getting Started

Package contents



The product box contains the following items:

- *Aries* electronic trim set internal and external plaque.
- Internal and external aesthetic covers.
- 2 x AA 3,6V high current lithium batteries.
- Installation guide.
- Warning sheet.



The items supplied with the *Device* and any available accessories may vary depending on the region or service provider. Appearances and specifications are subjected to change without prior notice.

Getting Started

Installing Aries



Installation must be performed only by skilled technical staff, following the *Aries Installation Guide*, available at: iseo.com.

For a correct procedure see also *Warnings* at the *Safety and Environment* chapter.

Programming and using Aries

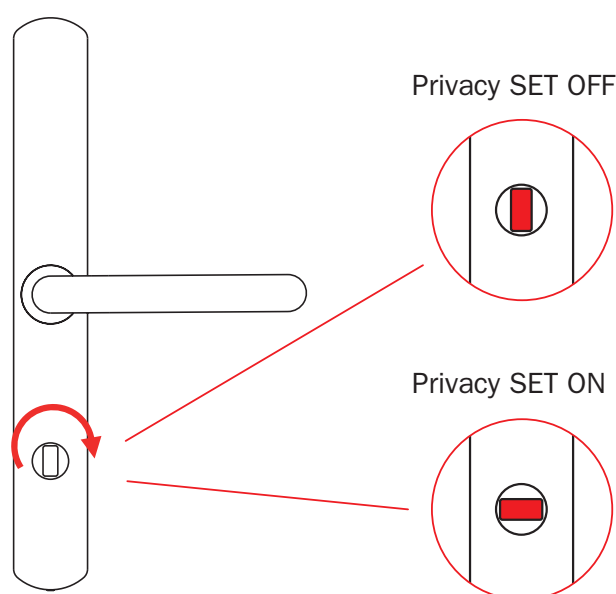


For these operations, please refer to *Argo User Manual for Aries Smart*, or *V364 System Administrator Manual for Aries*. Both available at: iseo.com.

Privacy function

This function allows a guest, inside the room, to block the access to all the other valid cards (i.e.: staff or maintenance cards), by rotating the privacy knob of Aries from the inside.

Only cards with override privacy function enabled can access to the room. It is basically the electronic version of the “Do Not Disturb” placard that you can apply outside the door of the hotel room.



The privacy is set automatically OFF every time the lock is opened from the inside or the outside.

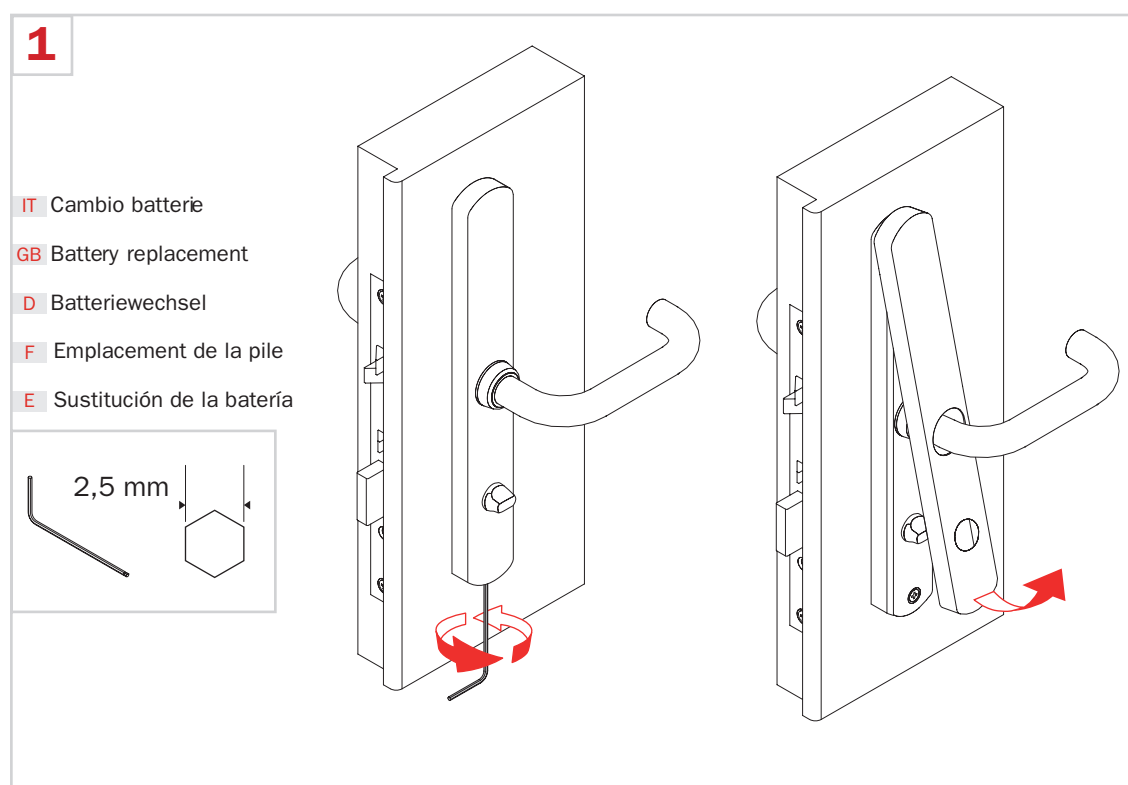
Maintenance

Battery replacement

Replace the *Aries* battery as soon as the software in use notifies you, following the procedure later illustrated in this topic. *Aries* has a multilevel battery charge detection, to allow a proper and in advance alert to change the battery.



For more information about battery low signals, refer to the *Argo User Manual* for *Aries Smart*, or *V364 System Administrator Manual* for *Aries*. Both available at: iseo.com.



When the new battery is connected to the *Device*, an automatic test is performed, and the *Device* flashes red and green alternatively, for a few seconds. Wait until the procedure is completed without removing the battery. If the battery test last more than 30sec for 2 times consecutively, replace the battery with a new one.

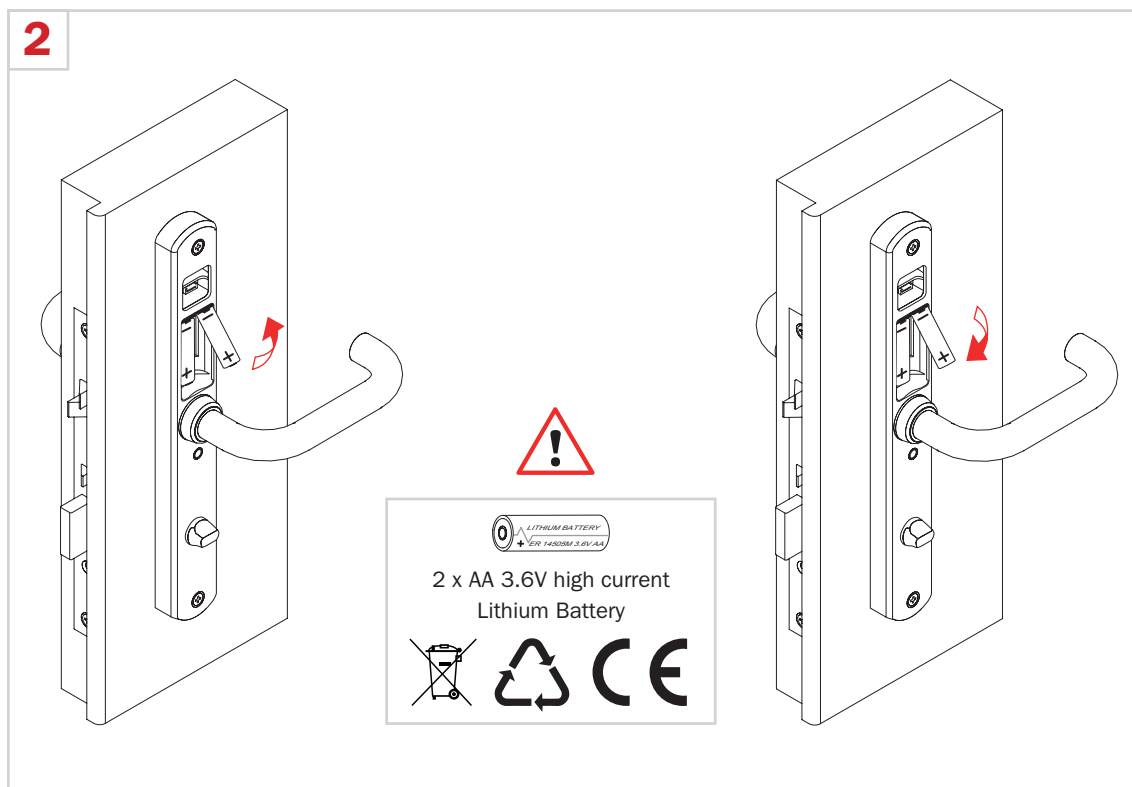
If the battery is disconnected for more than 5 minute, the *Device* clock might go out of synchronization. To synch the clock:

- *Aries Smart*: enter *Programming Mode* with *Master Card* and the door lock will automatically take smartphone date and time.
- *Aries*: use the maintenance tool available to synchronize the lock.



Battery replacement does not affect the data stored in the *User List*.

Maintenance



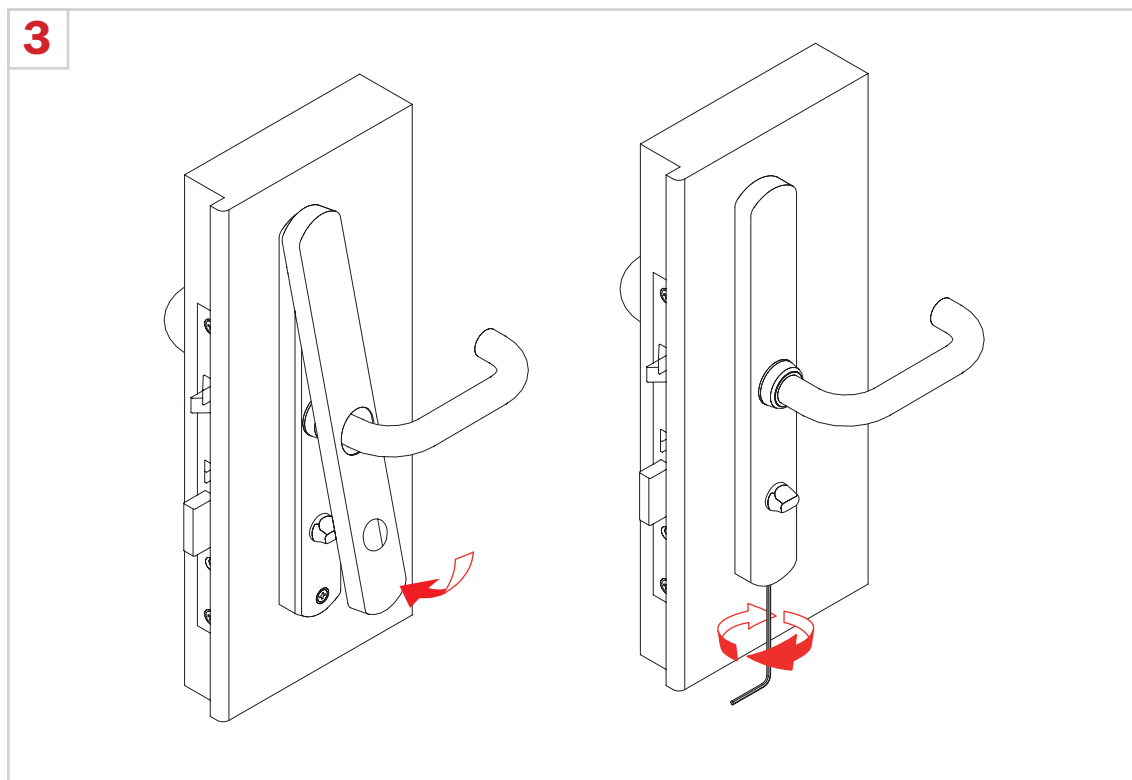
Do not use metal objects to help battery removal.

Risk of explosion if the battery is replaced with an incorrect type.

Replace both batteries at the same time with same model.

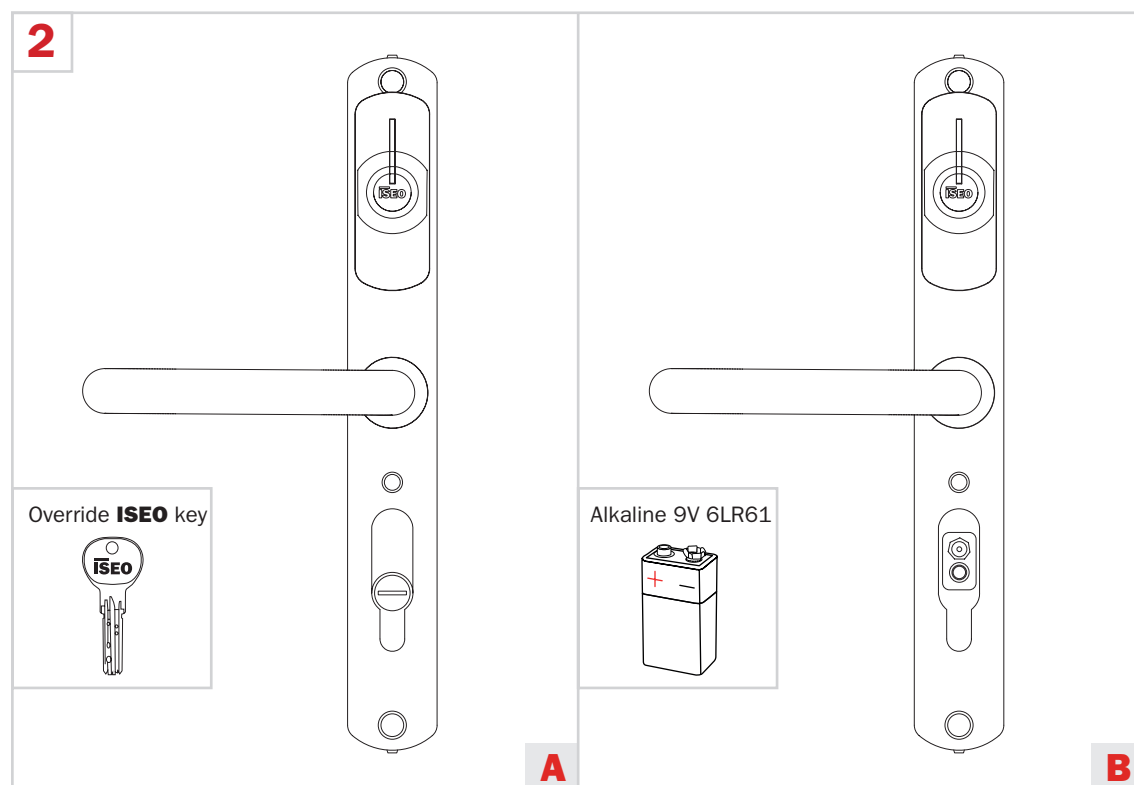
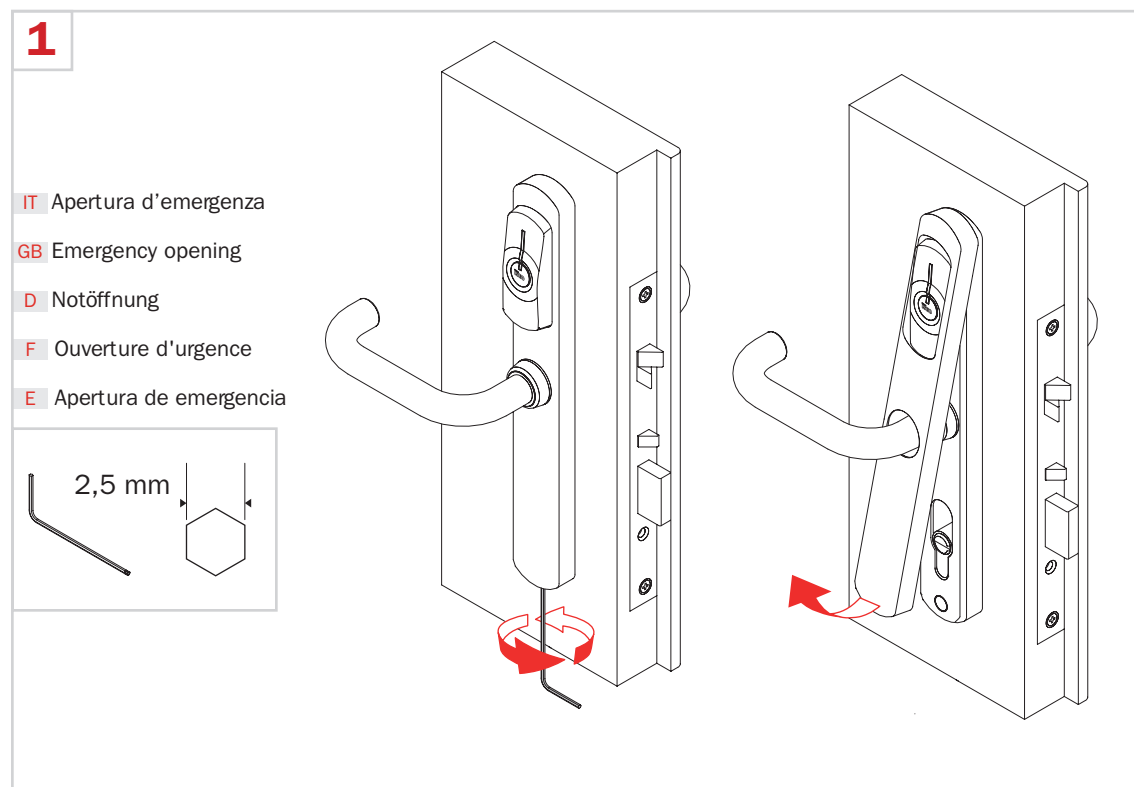
Dispose of batteries according to your local environmental laws and guidelines.

Battery replacement must be carried out by qualified technical staff.



Maintenance

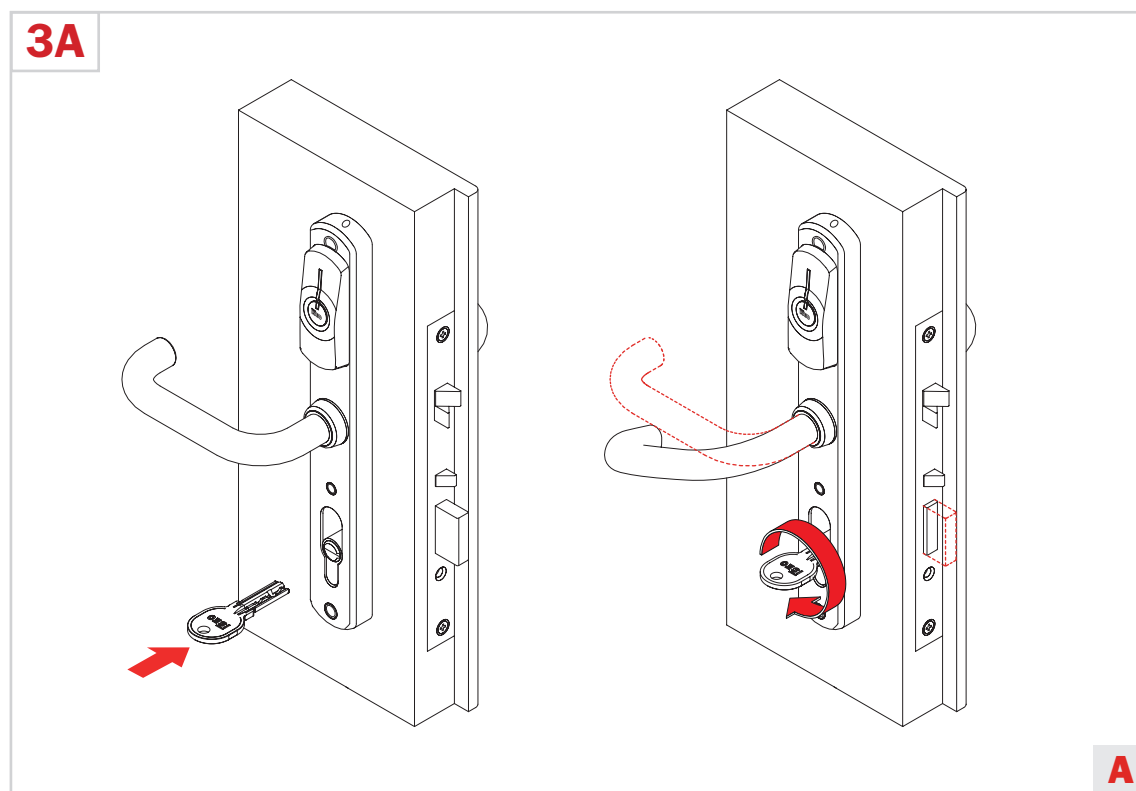
Emergency opening



Maintenance

A. Emergency opening by override cylinder

The electronic lock has an hidden emergency mechanical cylinder (option with visible cylinder available), under the aesthetic cover. It can be used to open the door in case of battery failure or any malfunctioning of the electronic trim. The use of the emergency cylinder is detected by the electronic trim set and registered in the event log. That means we can see all the mechanical key override by software in use, in the events menu.

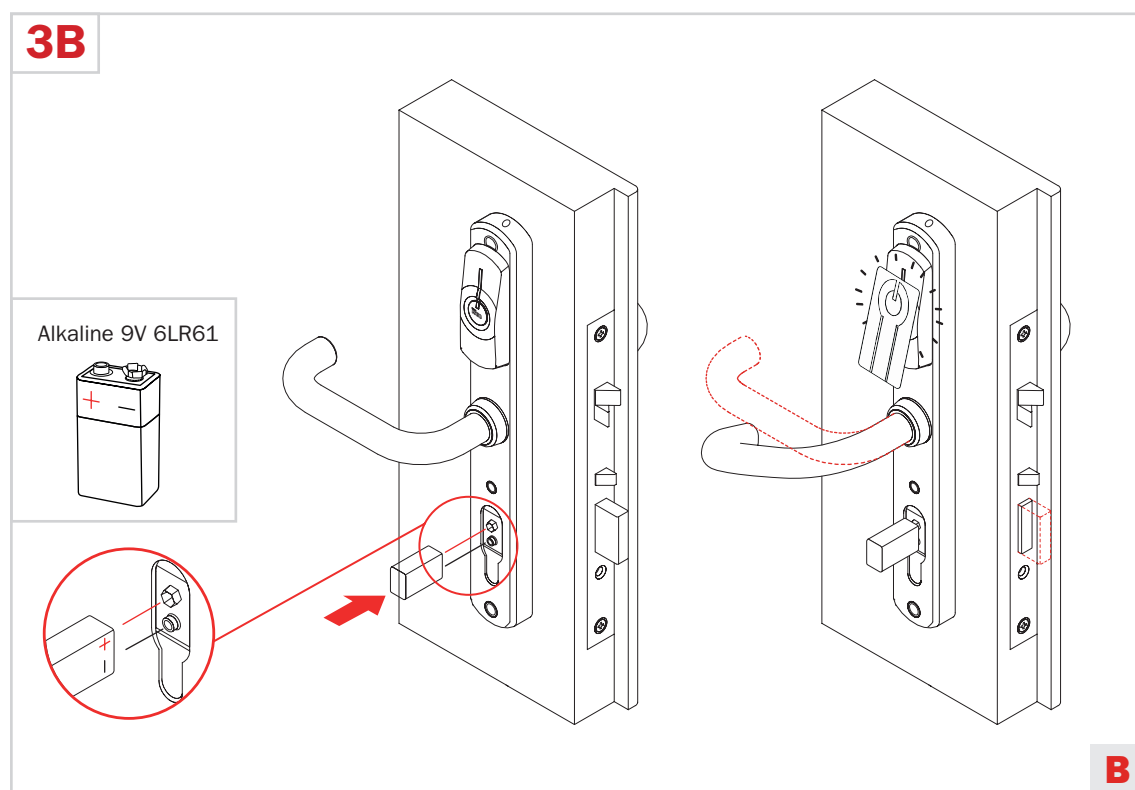


Maintenance

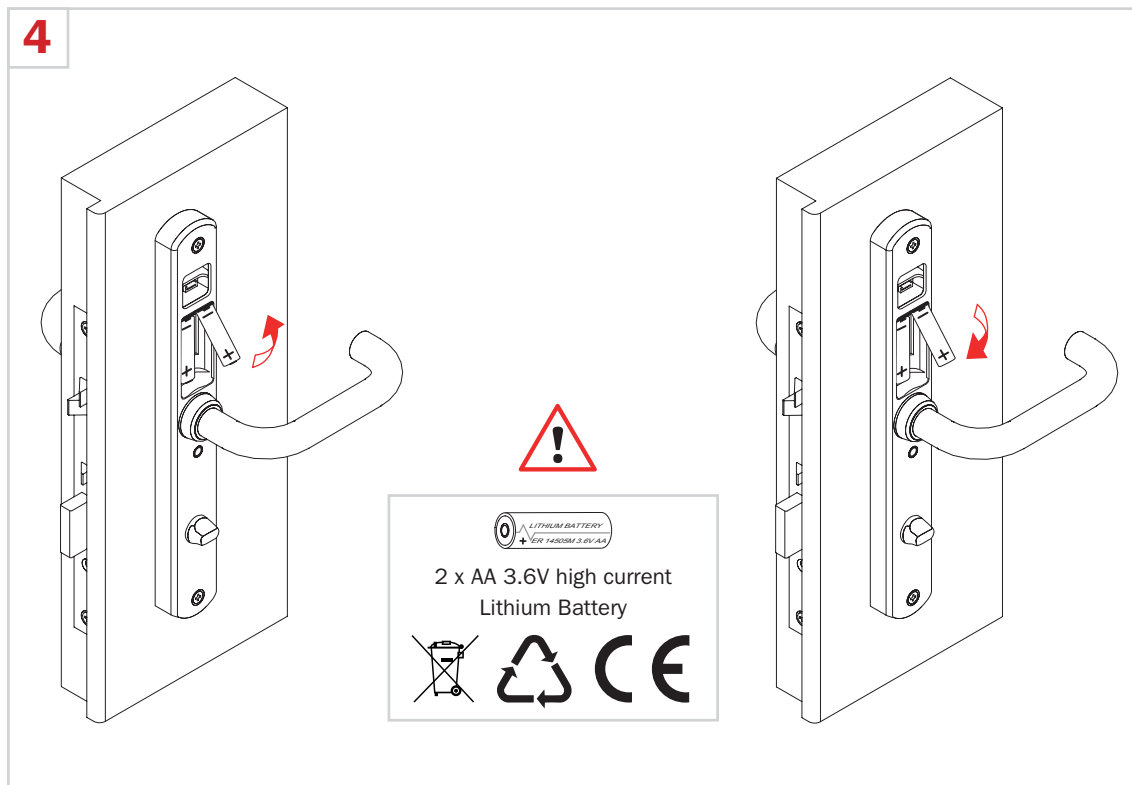
B. Emergency opening by external power supply

In case the mechanical emergency override cylinder is not installed, Aries can be provided with the external emergency power supply function, to be able to open the door in case of battery failure.

The external power supply plug is installed under the aesthetic cover, at the place of the emergency cylinder, and can be powered by a standard 9V battery.



Maintenance

4


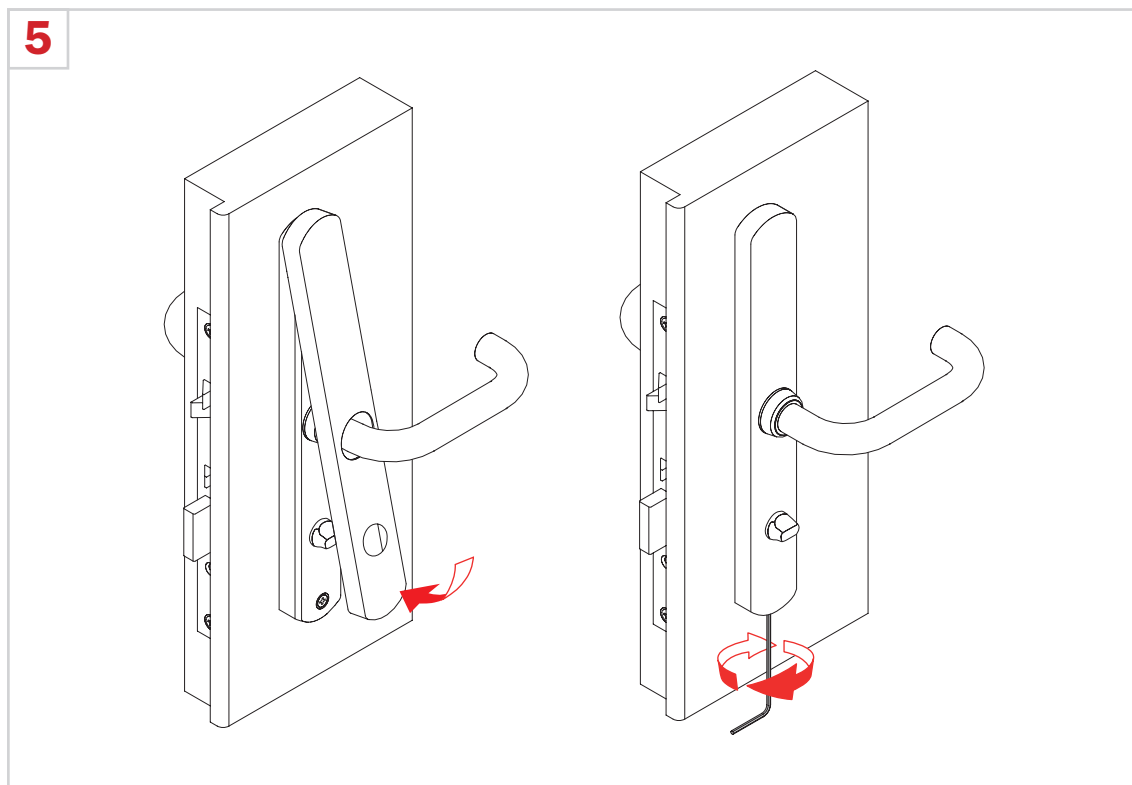
Do not use metal objects to help battery removal.

Risk of explosion if the battery is replaced with an incorrect type.

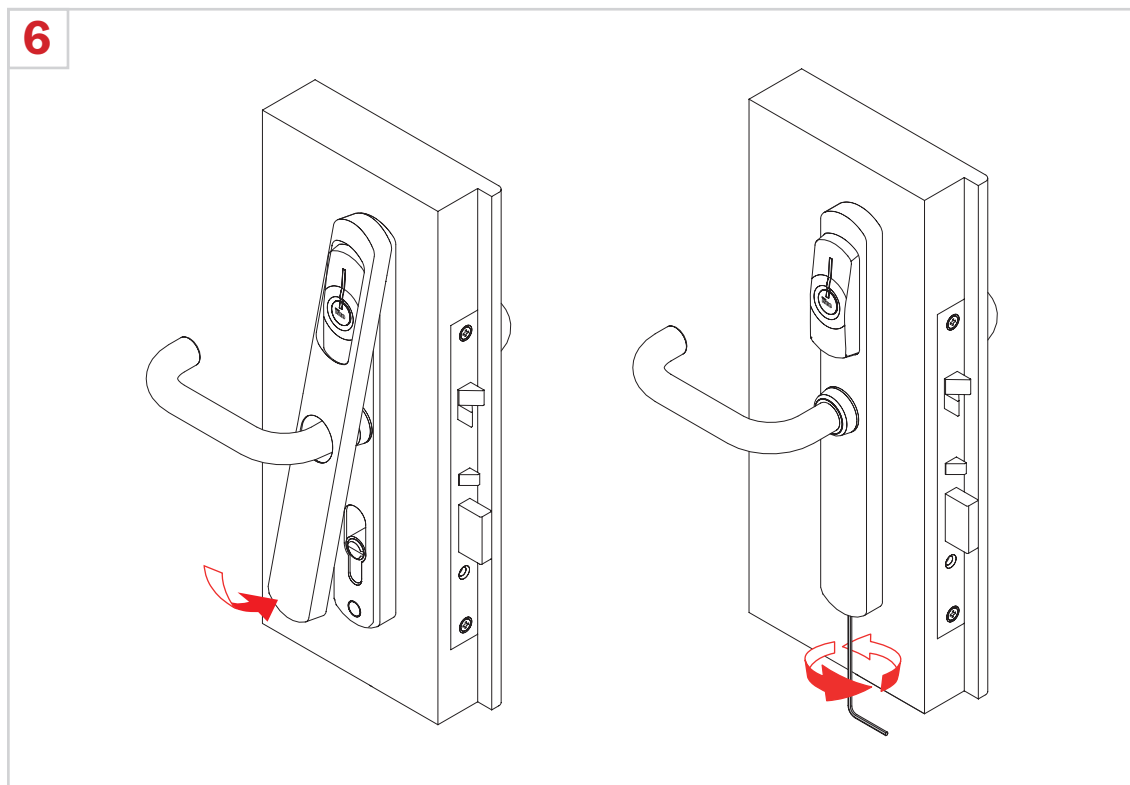
Replace both batteries at the same time with same model.

Dispose of batteries according to your local environmental laws and guidelines.

Battery replacement must be carried out by qualified technical staff.

5


Maintenance



Cleaning

- Clean the surface with a soft, damp cloth.
- Only disinfection agents that are explicitly formulated for cleaning delicate metal surfaces and plastics may be used. If unsuitable cleaning agents or methods are used, the surface may be damaged.
- Do not spray water or other liquids directly on the *Device*.
- Do not clean with chemicals such as alcohol, thinners, benzene, acidic or alkaline solvent cleaners, abrasive cleaners, or lubricants, as these may damage the device's finish and cause discoloration.

Storage

- For not installed product, store Aries in a clean dry place at a room temperature between -25°C and +75°C and relative humidity between 20% and 95%.
- For a better storage, use the original packing box.

Troubleshooting

Error messages



For this topic go to *Argo User Manual* or *V364 System Administrator Manual*, both available at iseo.com.

Aries troubleshooting

| Issue | Analysis | Solution |
|--|--|--|
| Aries does not sound and illuminate. | <ul style="list-style-type: none"> Battery empty. Connection cable between external and internal plaque disconnected. Electronic board malfunction. | <ul style="list-style-type: none"> Replace the battery. Check the connection cable. Replace the electronic trim set. |
| Aries correctly sounds and illuminates but does not open. | <ul style="list-style-type: none"> Battery very low. Installation issue. Electronic board or mechanic malfunction. | <ul style="list-style-type: none"> Replace battery. Check the installation. Replace the electronic trim set. |
| Aries does not open and does not correctly sound and illuminate. | <ul style="list-style-type: none"> Software issue. Electronic board or mechanic malfunction. | <ul style="list-style-type: none"> Contact the <i>ISEOZero1 Technical Support</i> (see “Technical assistance”). Replace the electronic trim set. |
| Aries is always opened | <ul style="list-style-type: none"> Check if Passage Mode function ON. Installation issue. Electronic board or mechanic malfunction. | <ul style="list-style-type: none"> Disable Passage mode by software. Check the installation. Replace the electronic trim set. |



For Aries spare part codes, refer to the on-line catalogue available at iseo.com or call the *ISEOZero1 Technical Support* (go to *Technical assistance*).

Troubleshooting

Light and acoustic signals



For this topic go to “Light and acoustics signals” in the *Argo User Manual* or in the *V364 System Administrator Manual*, both available at iseo.com.

Technical assistance

For any help please contact *ISEOZero1 Technical Support*. Visit iseo.com website to find your country telephone number.

When you contact the *ISEOZero1 Technical Support* please provide the next information:

- Device Model
- Date of purchase
- Software version
- Precise description of the problem

Notes

This image shows a blank sheet of white paper with horizontal ruling lines. The lines are evenly spaced and run across the width of the page. There are no margins, text, or other markings on the paper.



Iseo Serrature s.p.a.
Via San Girolamo 13
25055 Pisogne (BS)
ITALY
iseo@iseo.com

Cerraduras Iseo Ibérica S.L.
C/ Las Marineras 2
28864 Ajalvir - Madrid
SPAIN
zero1-es@iseo.com



ISEO Zero1

ITALY

Via Don Fasola 4
I-22069 Rovellasca (CO)
zero1-it@iseo.com
iseozero1@iseo.com



GERMANY

ISEO Deutschland GmbH
zero1-de@iseo.com



FRANCE

ISEO France s.a.s.
zero1-fr@iseo.com
+33 1 64835858

ASIA

ISEO Asia Pacific SDN. BHD.
zero1-asia@iseo.com
+603 80753331

ISEO Beijing
zero1-cn@iseo.com
+8610 58698079

UNITED ARAB EMIRATES

Iseo Projects and Access Control DMCC
iseoprojects@iseo.com
+971 4 5136162

SOUTH AFRICA

ISEO South Africa (Pty) LTD
zero1-za@iseo.com

ROMANIA

Feroneria Prod S.A.
zero1-ro@iseo.com

iseozero1.com

